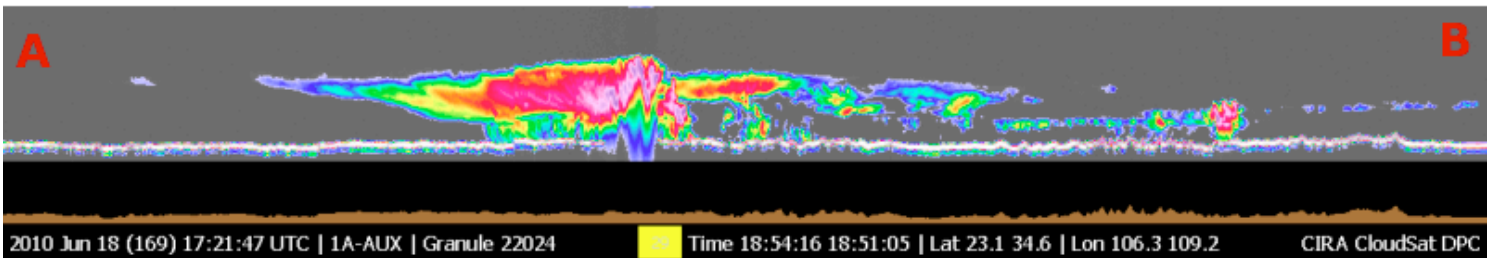
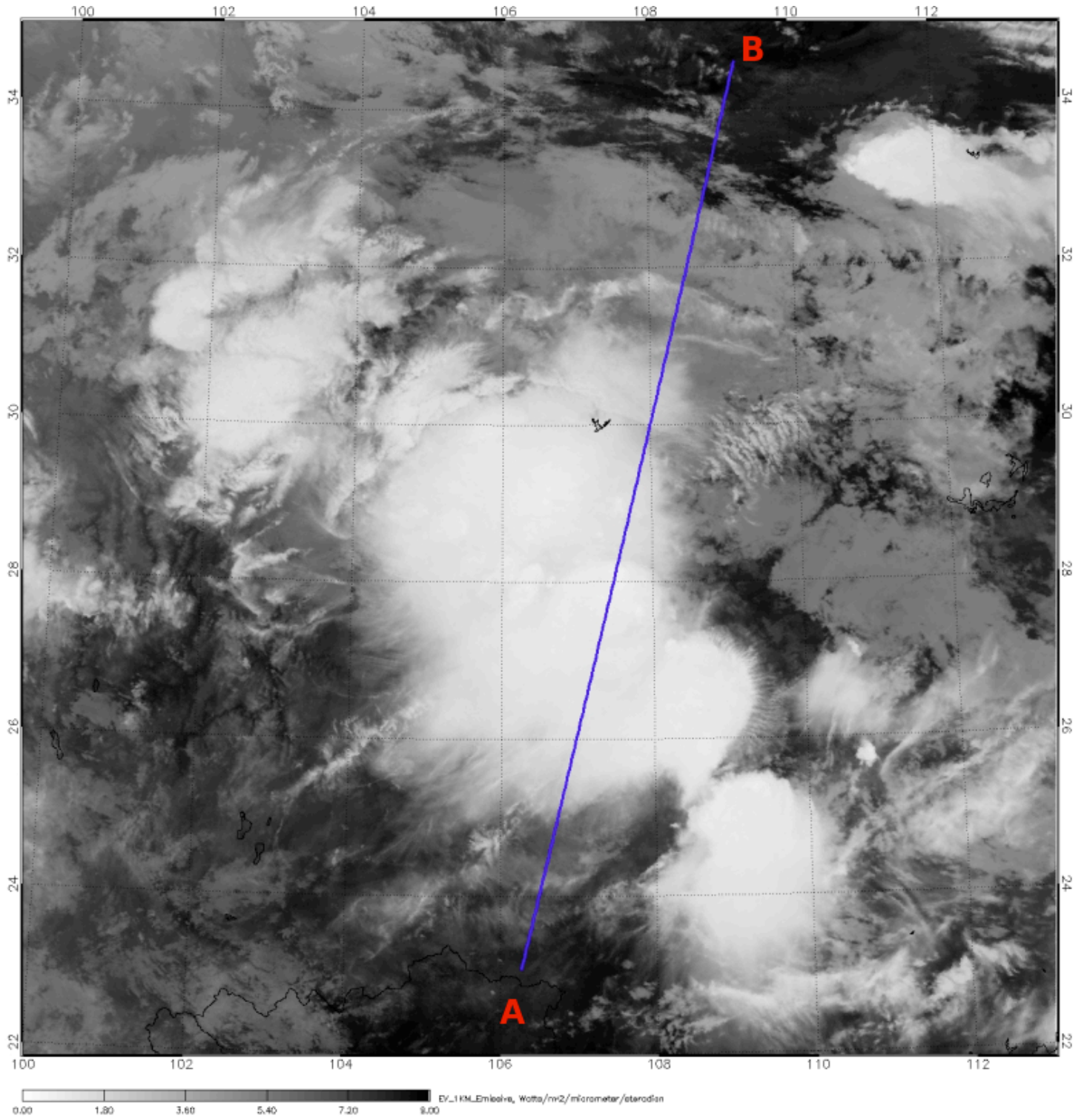
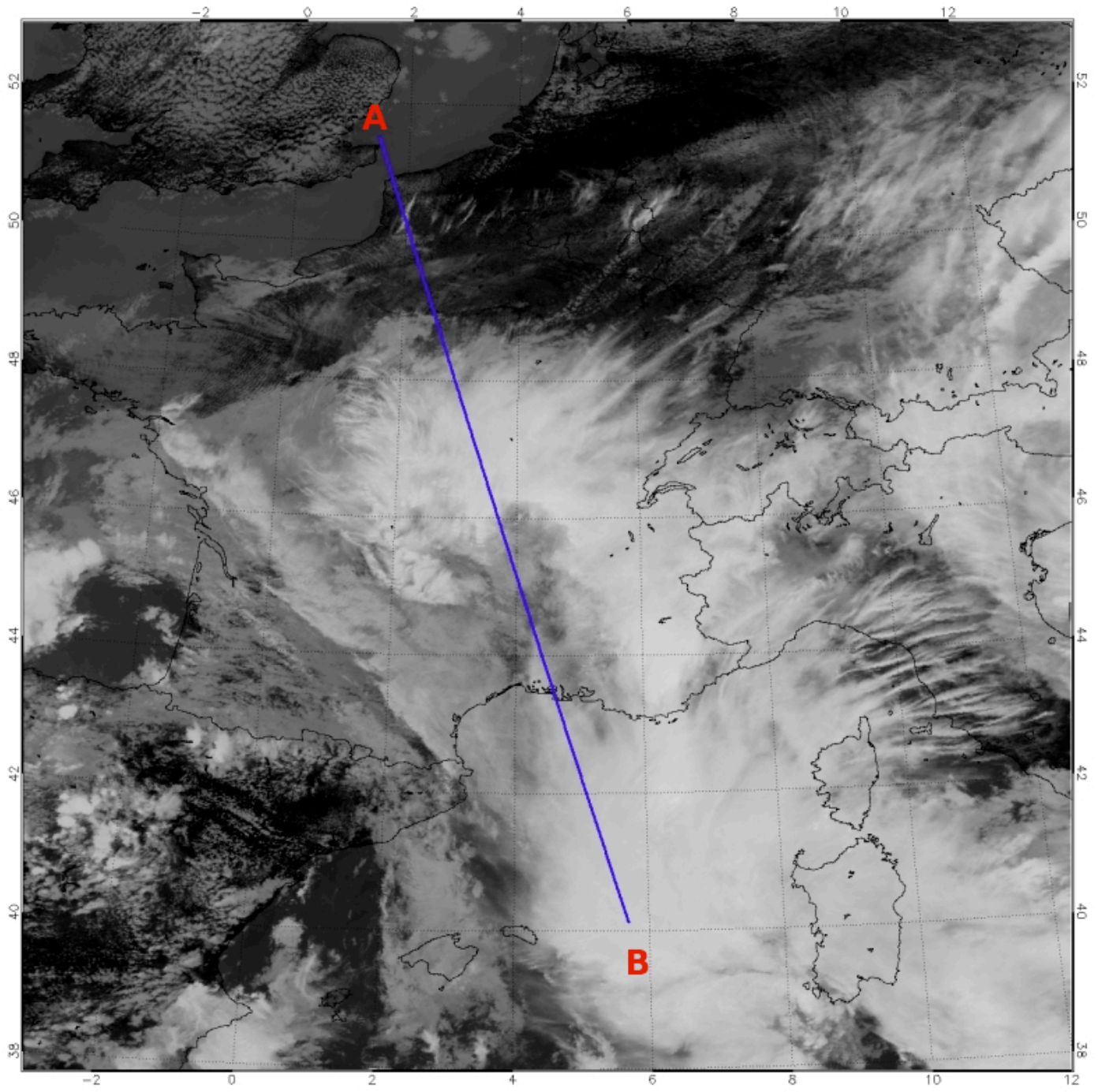


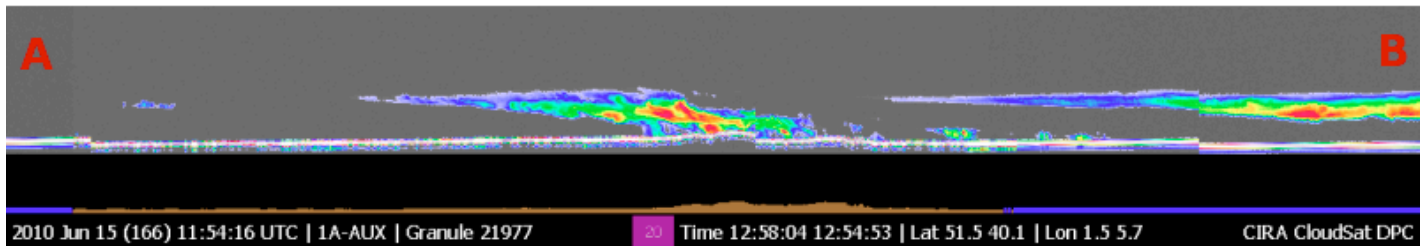
# Flooding in China



# Flooding in France

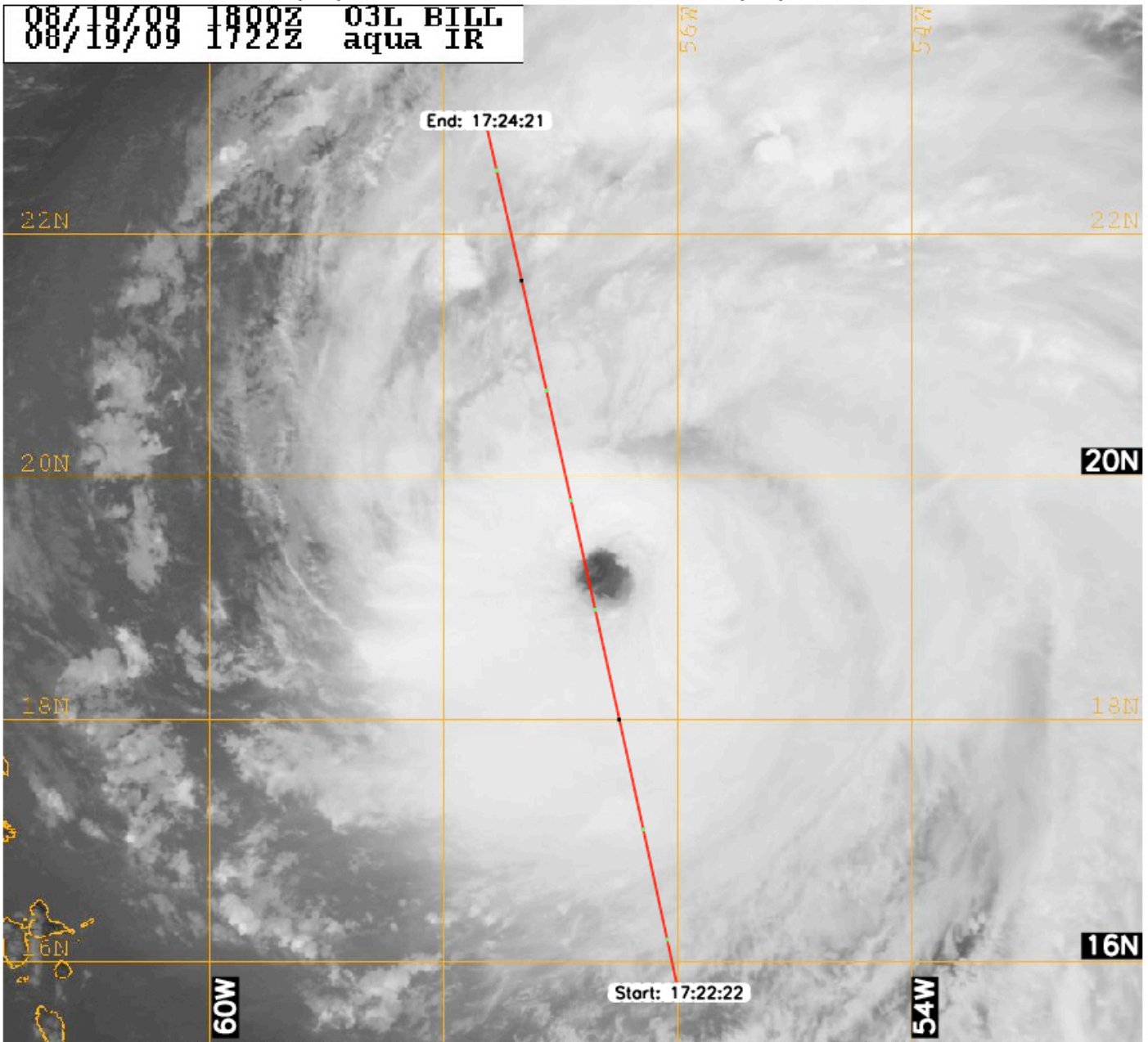


0.00 1.80 3.60 5.40 7.20 9.00 EV\_1KM\_Emission, Watts/m2/micrometer/steradian

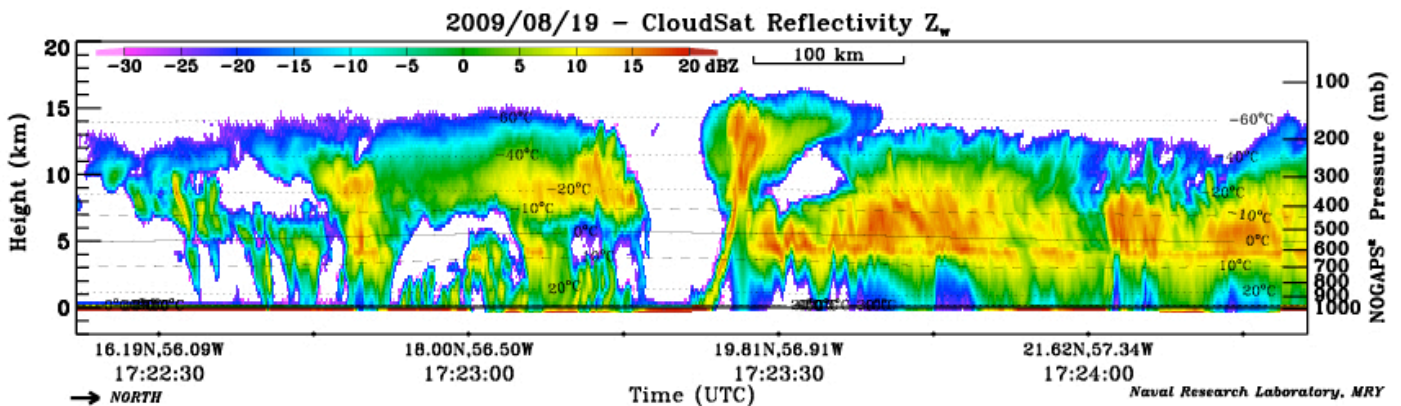




2009/08/19 CloudSat track - AQUA-1 IR 2009/08/19 17:22Z



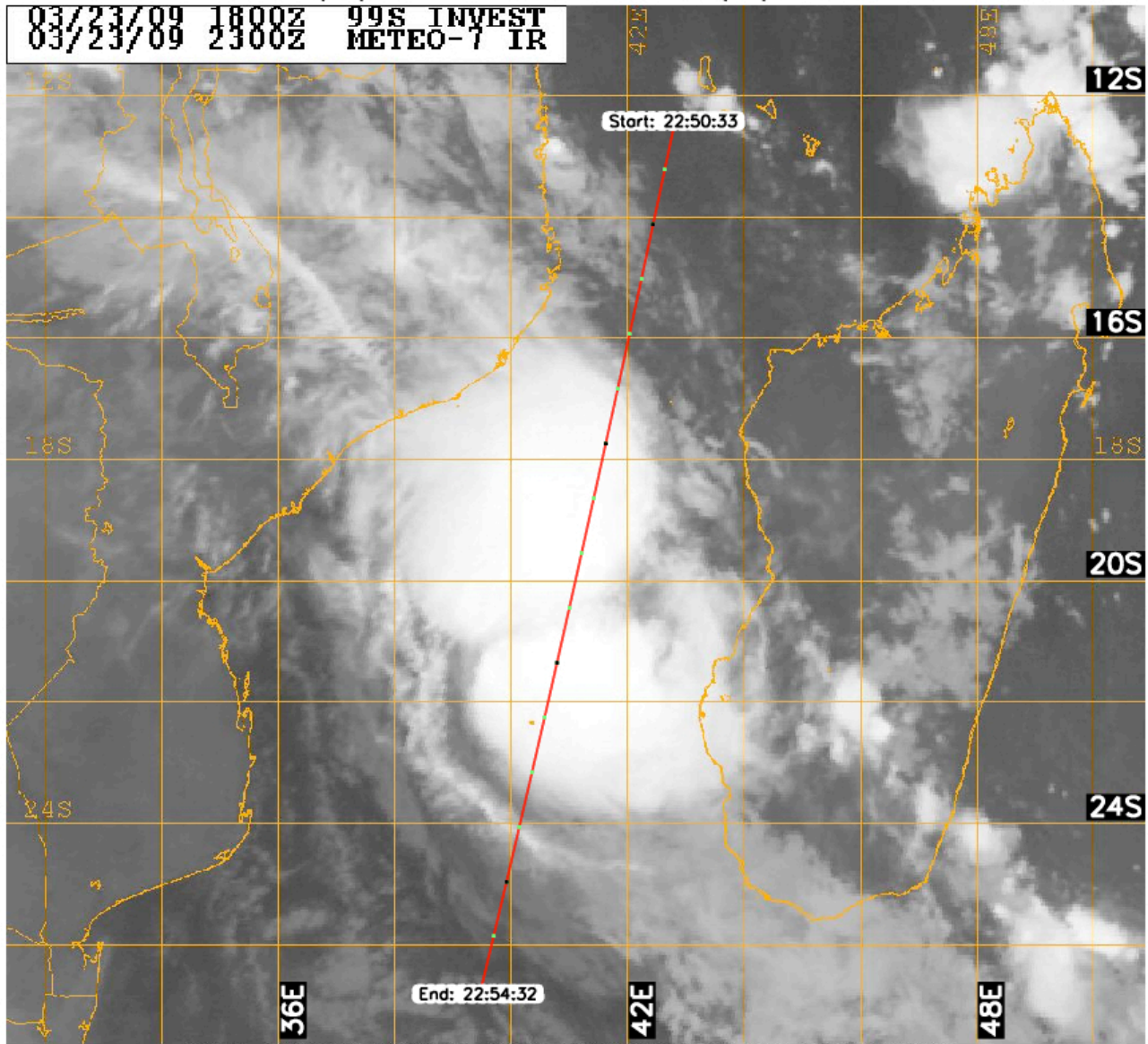
Naval Research Laboratory [http://www.nrlmry.navy.mil/sat\\_products.html](http://www.nrlmry.navy.mil/sat_products.html)  
Infrared



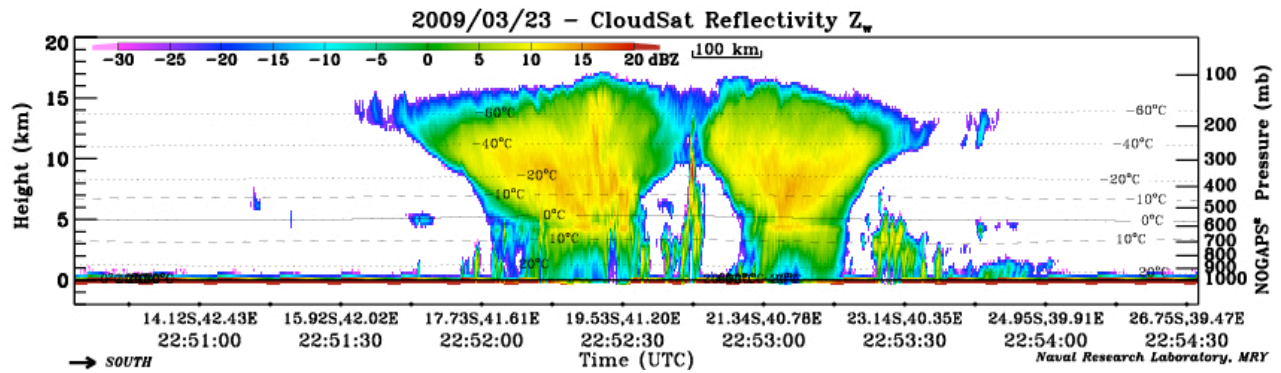
Hurricane Bill

# Typhoon Izilda I

2009/03/23 CloudSat track - GEO IR 2009/03/23 23:00Z



Naval Research Lab [http://www.nrlmry.navy.mil/sat\\_products.html](http://www.nrlmry.navy.mil/sat_products.html)  
 <-- IR Temperature (Celsius) -->

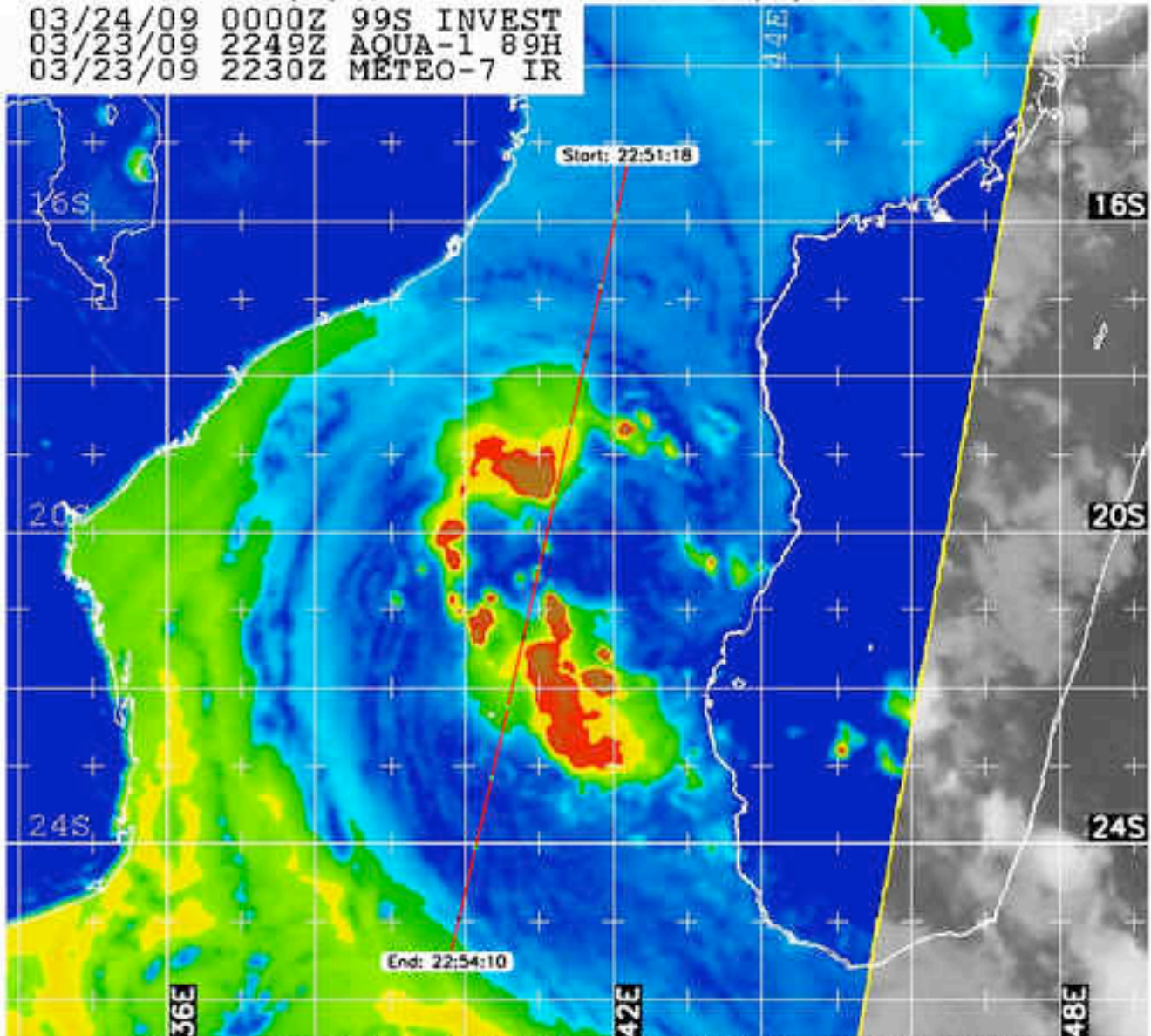




# Typhoon Izilda II

2009/03/23 CloudSat track - AQUA-1 89H 2009/03/23 22:49Z

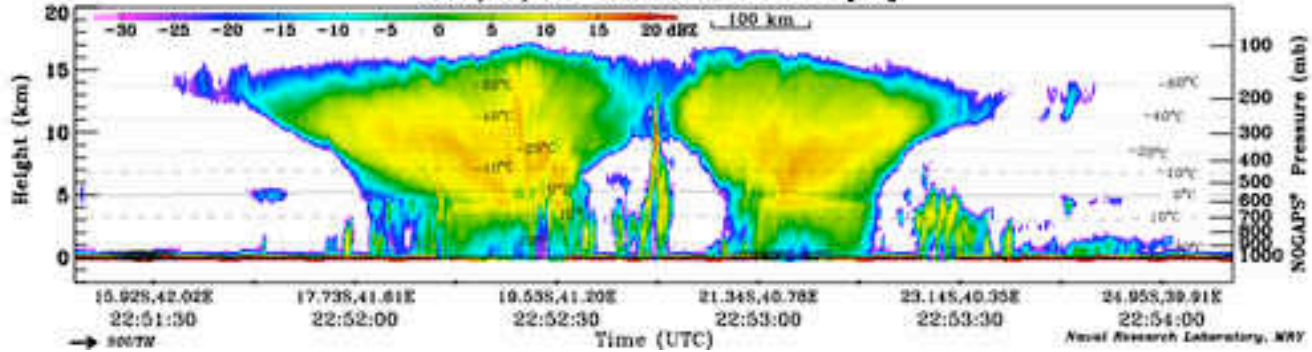
03/24/09 0000Z 99S INVEST  
 03/23/09 2249Z AQUA-1 89H  
 03/23/09 2230Z METEO-7 IR



Naval Research Lab [www.nrlmry.navy.mil/sat\\_products.html](http://www.nrlmry.navy.mil/sat_products.html)  
 <-- 89H Brightness Temp (Kelvin) -->



2009/03/23 - CloudSat Reflectivity  $Z_w$

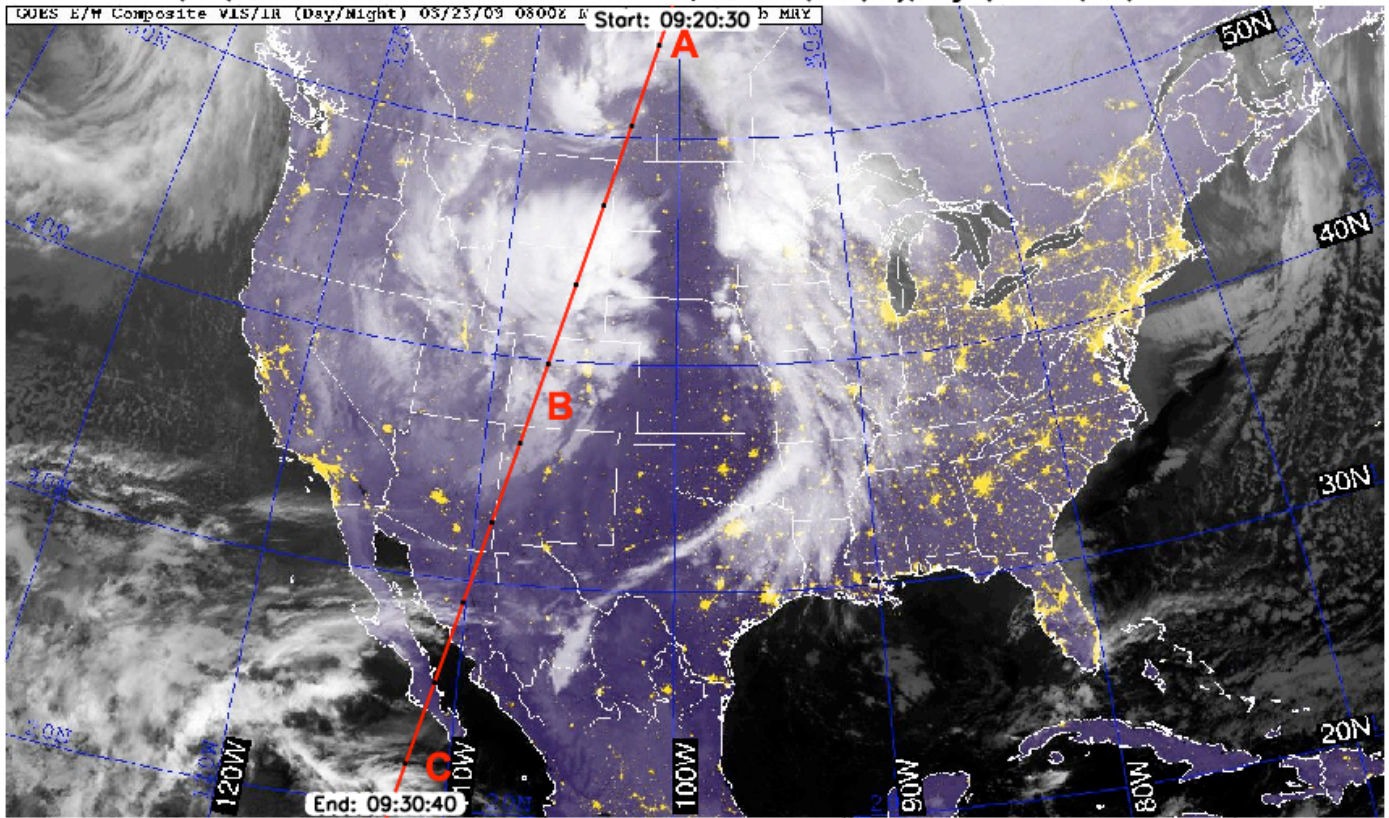


Naval Research Laboratory, NRY

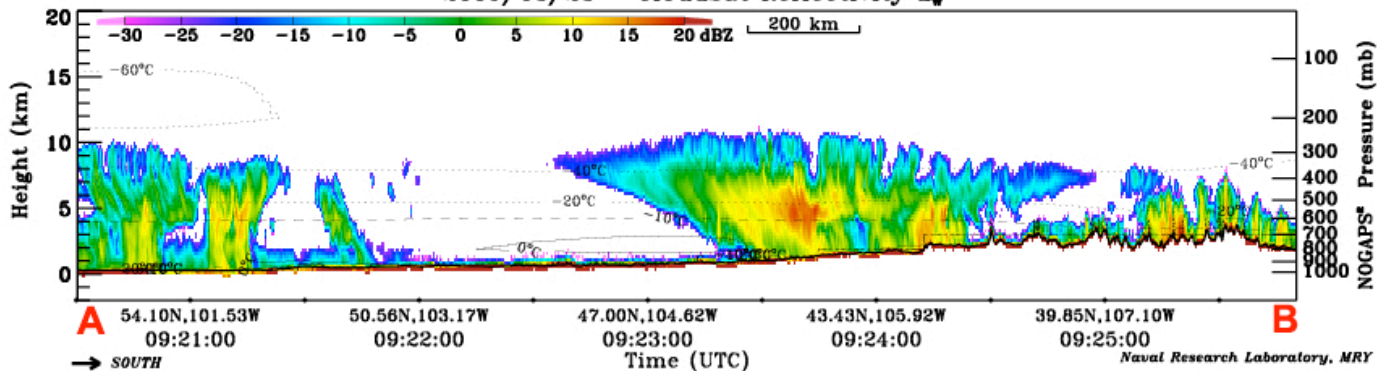


# Midwest Front

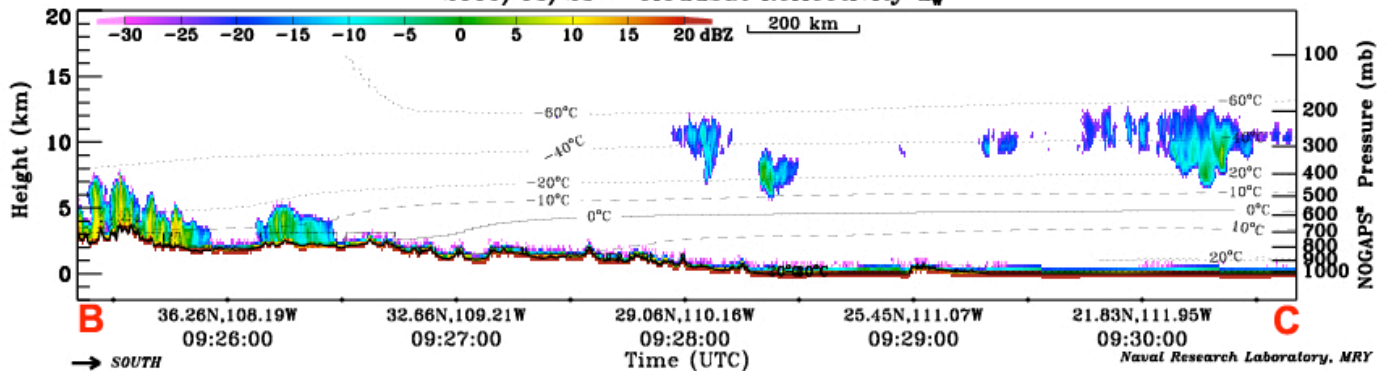
2009/03/23 CloudSat track – GOES E&W composite VIS/IR (Day/Night) 2009/03/23 08:00Z



2009/03/23 – CloudSat Reflectivity  $Z_w$



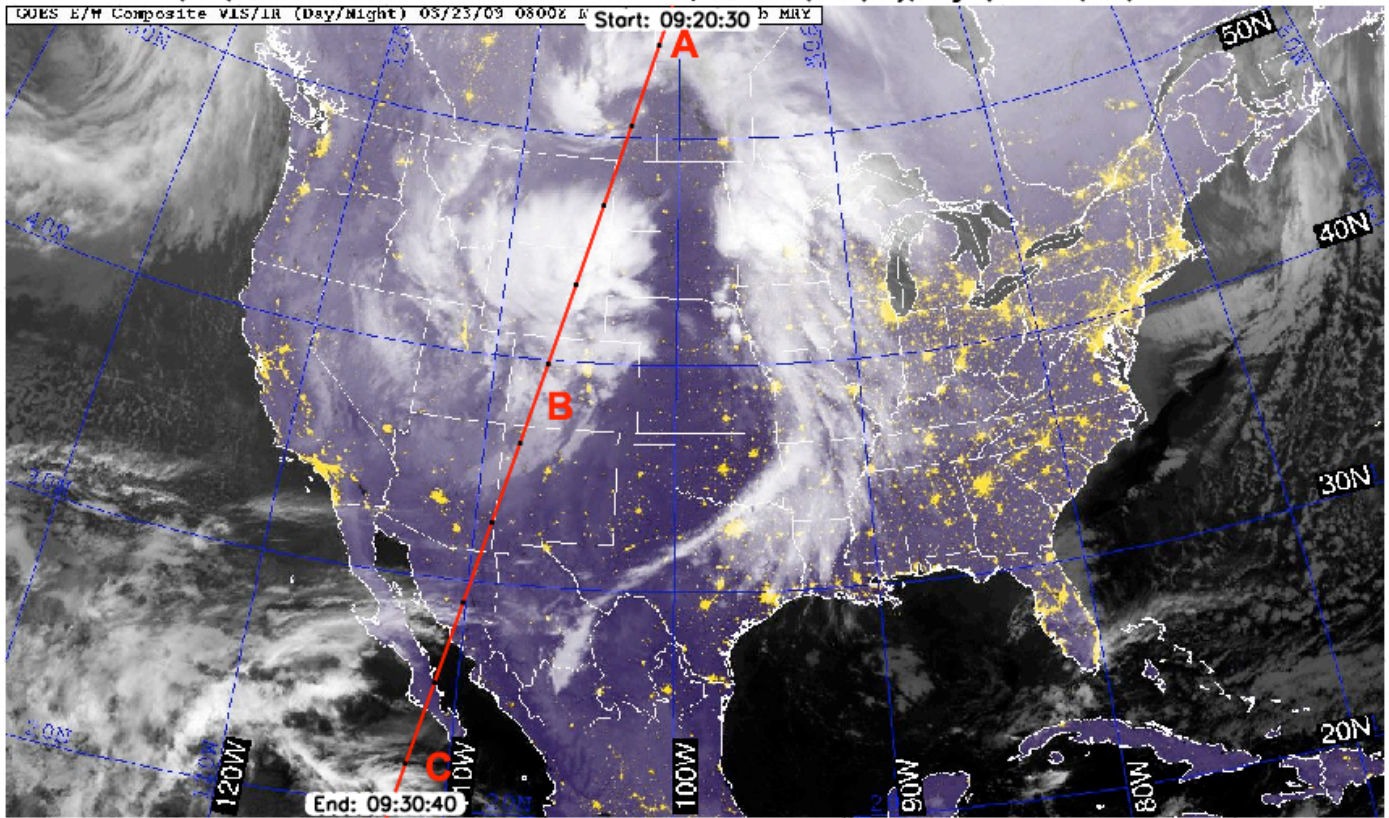
2009/03/23 – CloudSat Reflectivity  $Z_w$



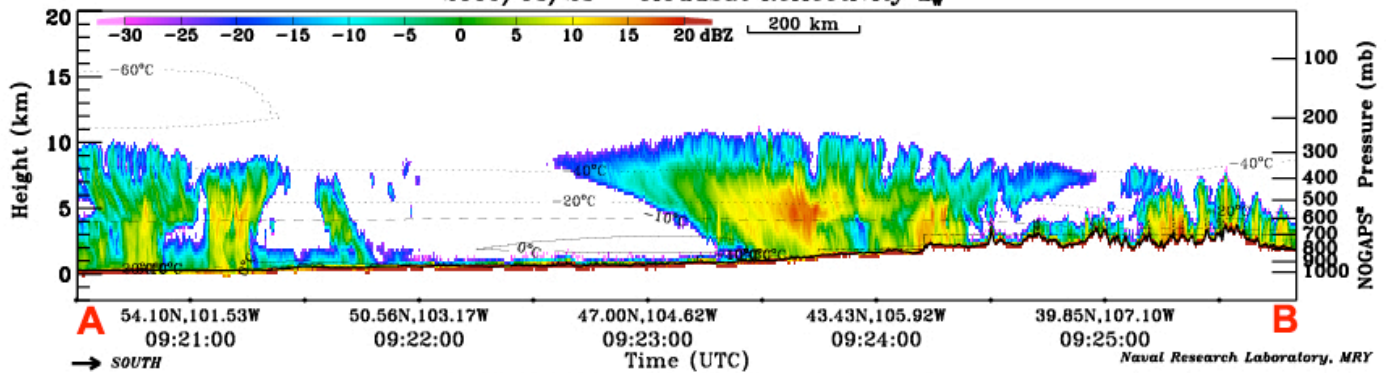


# Midwest Front

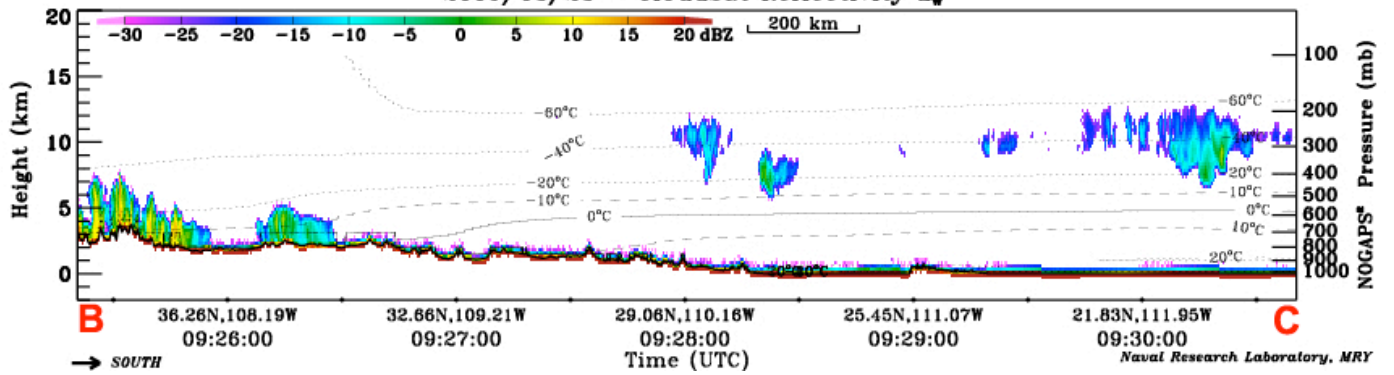
2009/03/23 CloudSat track – GOES E&W composite VIS/IR (Day/Night) 2009/03/23 08:00Z



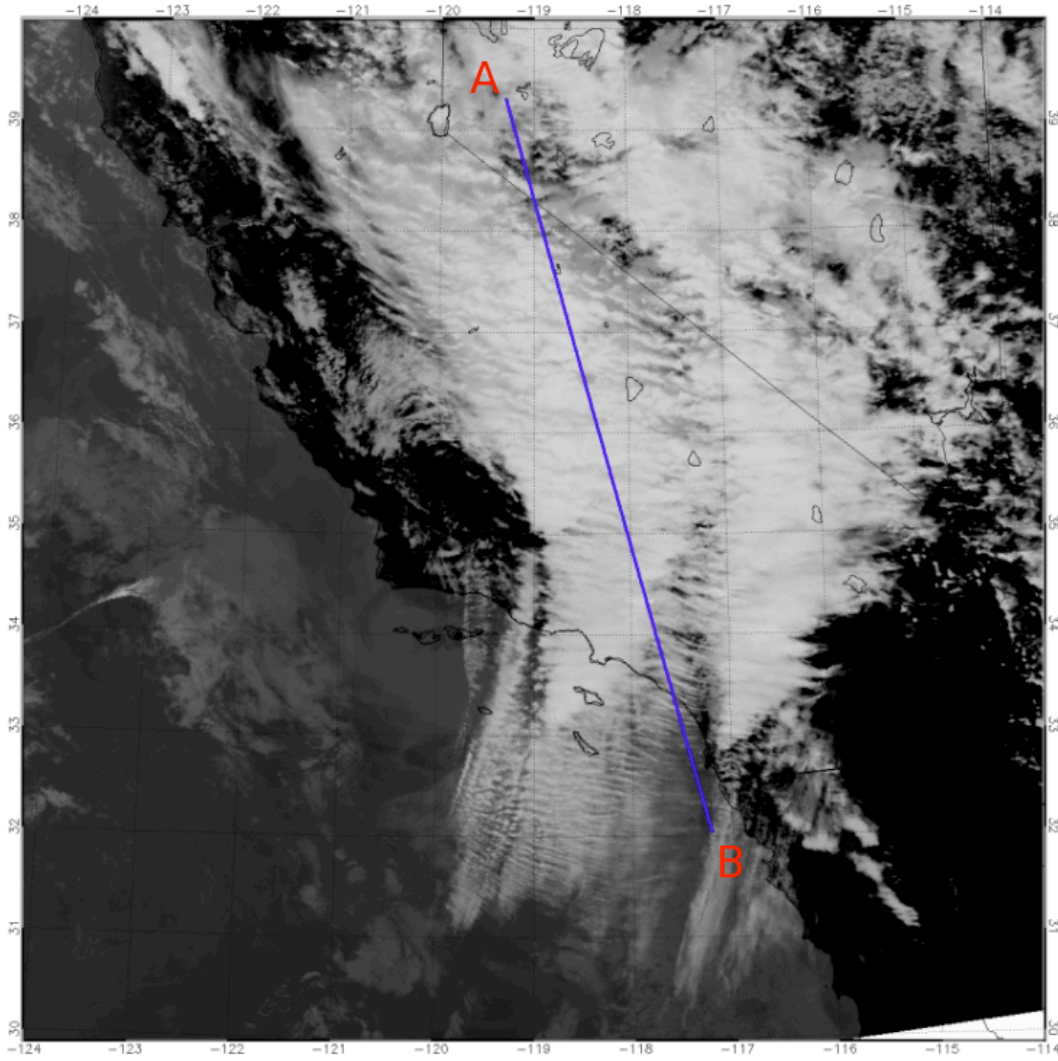
2009/03/23 – CloudSat Reflectivity  $Z_w$



2009/03/23 – CloudSat Reflectivity  $Z_w$



# June 3, 2009



21:17:00

21:19:03

